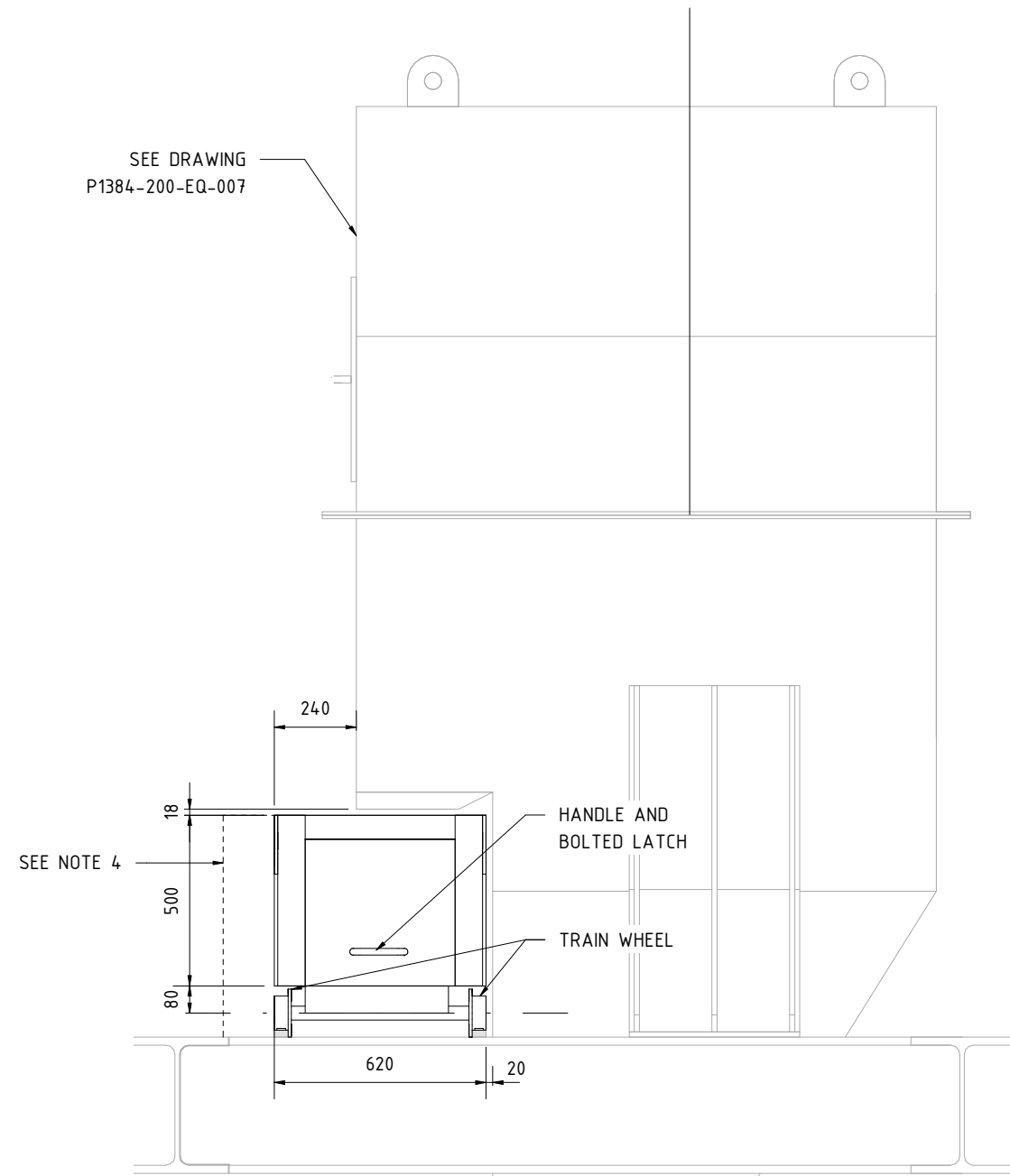
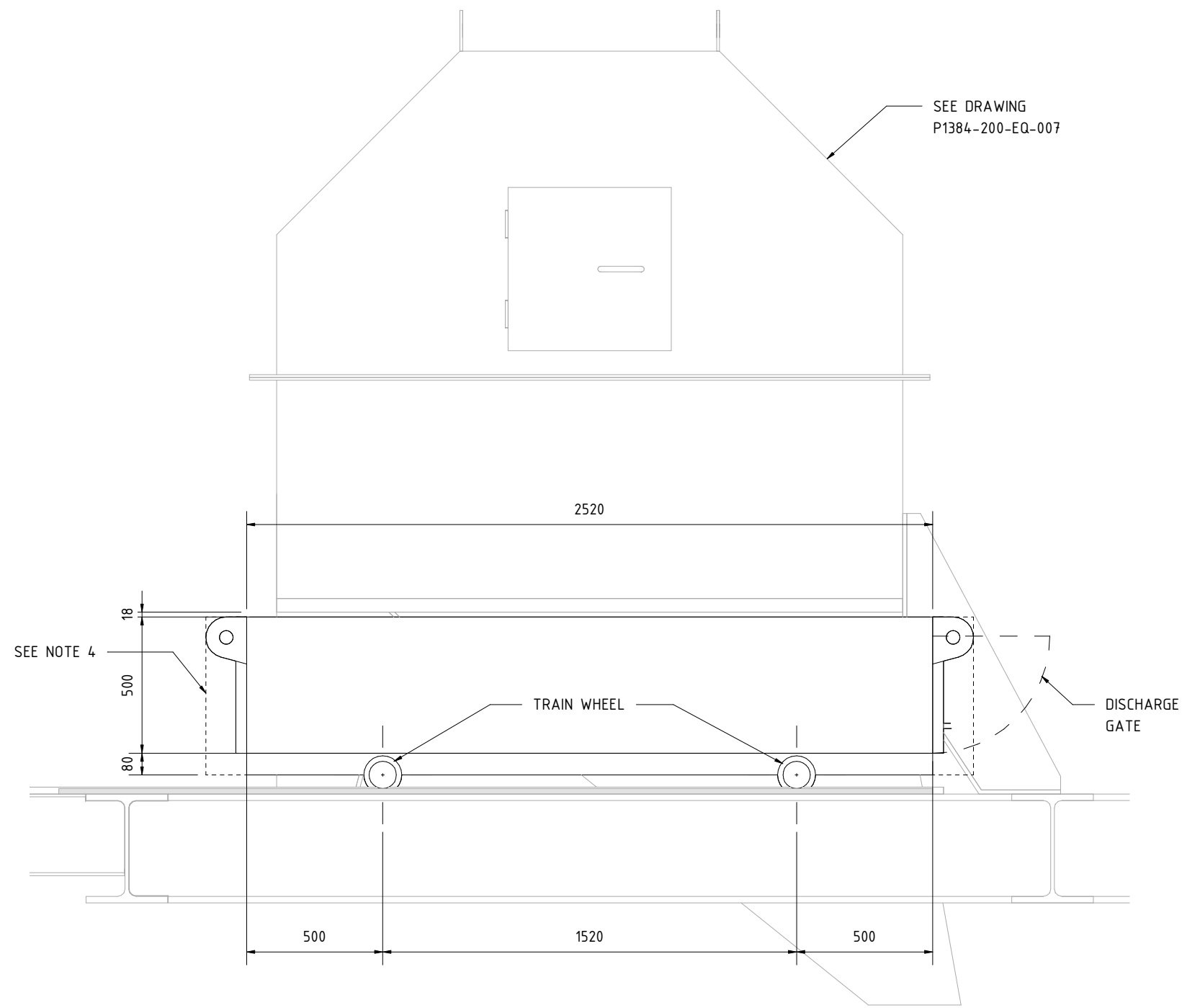


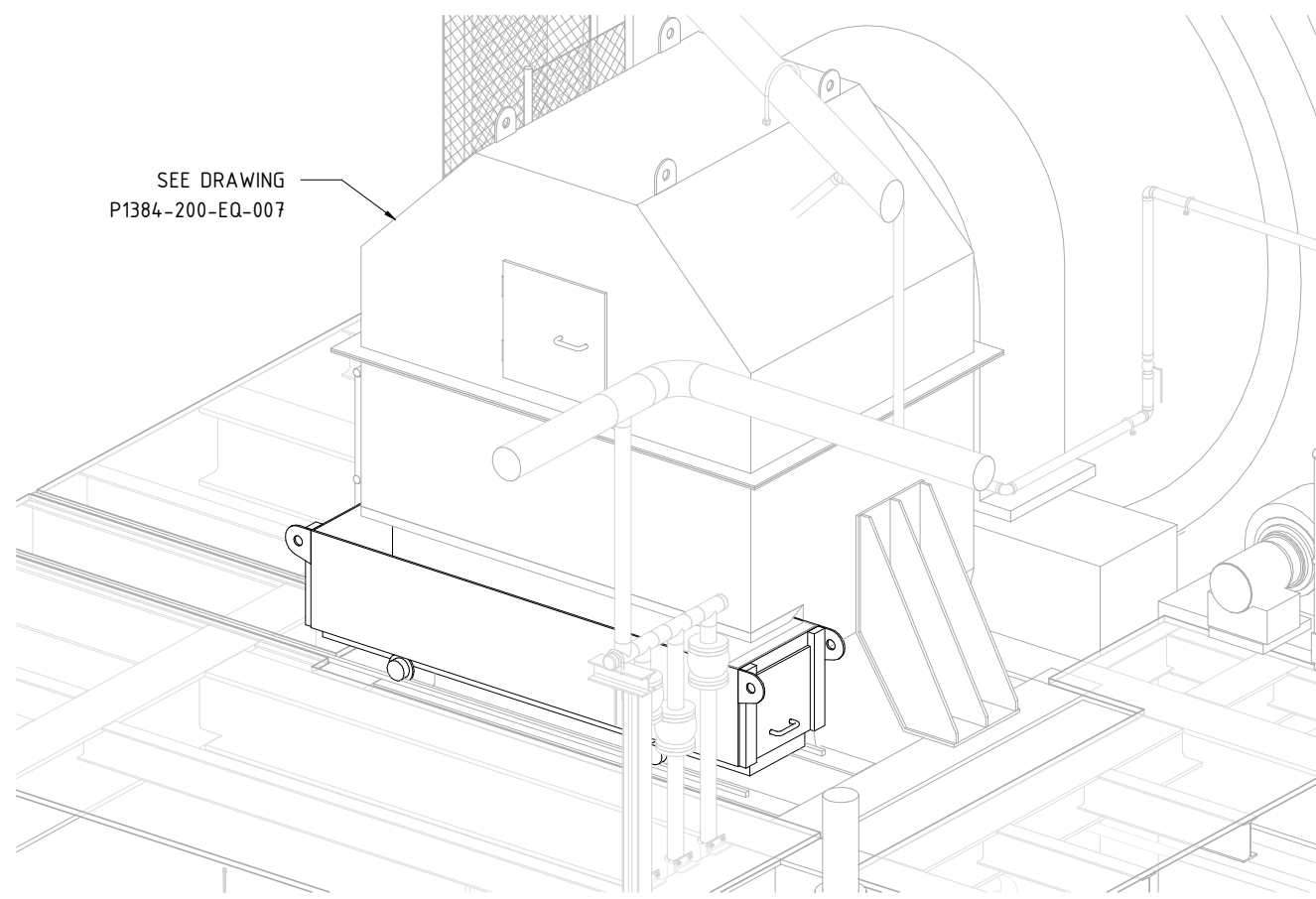
PLAN VIEW  
1 : 20



VIEW A  
1 : 20






VIEW B  
1 : 20



Notes:

- 1) FOR DETAIL DESIGN PURPOSES. NOT FOR CONSTRUCTION.
- 2) THIS DRAWING HAS BEEN PRODUCED WITH THE DIMENSIONS PROVIDED BY PROCESS DESIGN ENGINEERING TO INTEGRATE THE EQUIPMENT IN THE 3D MODEL , AND WITH THE EXCEPTION OF THE DIMENSIONS SHOWN THAT ARE CONSIDERED FIXED, THE REST OF DIMENSIONS AND MATERIAL SPECIFICATION THAT ARE REQUIRED FOR THIS EQUIPMENT TO WORK SAFELY AS PER PROCESS REQUIREMENTS ARE TO BE DEFINED BY EQUIPMENT DETAIL ENGINEERING AND FABRICATION SUPPLIER/MANUFACTURER.
- 3) THIS DRAWING SHOWS ONLY BASIC AND FUNCTIONAL DIMENSIONS. STEEL PLATES THICKNESS, REINFORCING, BASE PLATES AND STIFFENERS TO BE ADDED.
- 4) - - - - DASHED LINE DENOTES THE CONTOUR LIMIT OF THE STIFFENERS IN ORDER TO AVOID CLASHING WITH THE REST OF ELEMENTS OF THE PLANT.

1	MRF	17/04/2023	ATB	17/04/2023	ATB	17/04/2023	FOR DETAIL ENGINEERING	
0	MRF	17/04/2022	ATB	17/04/2022	ATB	17/04/2022	FOR DETAIL ENGINEERING	
Rev.	Author/Date		Checked/Date		Approved/Date		Description	
<div>Customer: JSC RMG Auramine LLC</div> <div></div>					Project:  BEQTAQARI DETAIL ENGINEERING			
					Title:  200-BX-003  DIMENSIONAL DRAWING  SCATS BOX			
					3d model: P1384-200-RV-200-2c-grinding			
<div></div>					Customer doc. code:			
Area: 200		Scale: 1:20		Format: A2		Doc. code:  P1384-200-EQ-008		Rev: 1